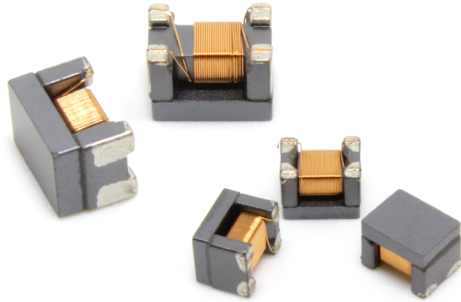


Automotive Pulse Chip™ CAN/CAN-FD Chokes 2-Line EMI Suppression for CAN-FD Bus Networks



Features and Benefits:

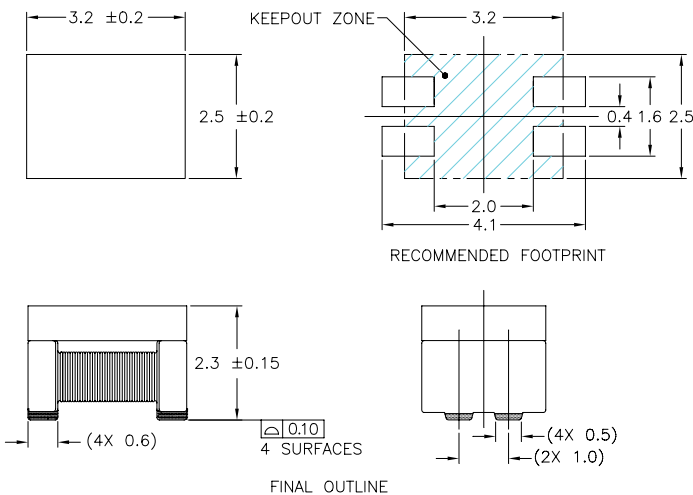
- ⌚ Robust construction for vibration and shock resistance
- ⌚ Wide interface coverage up to $\leq 10\text{Mbps}$ applications
- ⌚ Supports CDMR CAN Class 1,2, and 3
- ⌚ Multiple inductance alternatives available
- ⌚ Extended operating temperature range up to 150°C
- ⌚ Premium extensions – qualified at OEMs and standard committees

Electrical Specifications @ 25°C

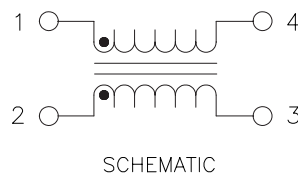
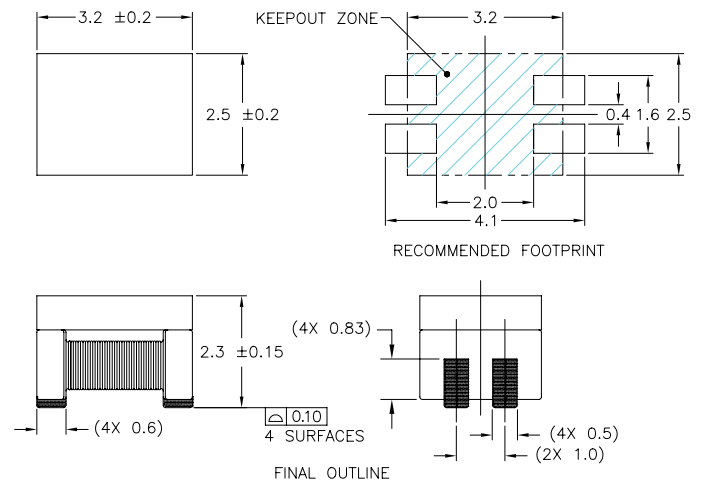
Part Number	Common Mode Impedance (10MHz) Min	Common Mode Impedance (10MHz) Typ	Inductance (uH)	Standard Tolerance	RDC (Ω Max)	IDC (mA Max)	Isolation Resistance (M Ω Min)	Rated Voltage (V Max)	Operating Temperature
AC1210-110-C	300	560	11	-30%/+50%	0.5	300	10	50	-55°C to 150°C
AC1210-220-C	500	1200	22	-30%/+50%	0.8	300	10	50	-55°C to 150°C
AC1210-510-C	1000	2800	51	-30%/+50%	1	150	10	60	-40°C to 125°C
AC1210-101-C	2200	4200	100	-30%/+50%	3	100	10	60	-40°C to 125°C
AC1210-101-D	2200	4700	100	-30%/+50%	3	100	10	60	-40°C to 125°C

MECHANICAL

AC1210-XX0-C

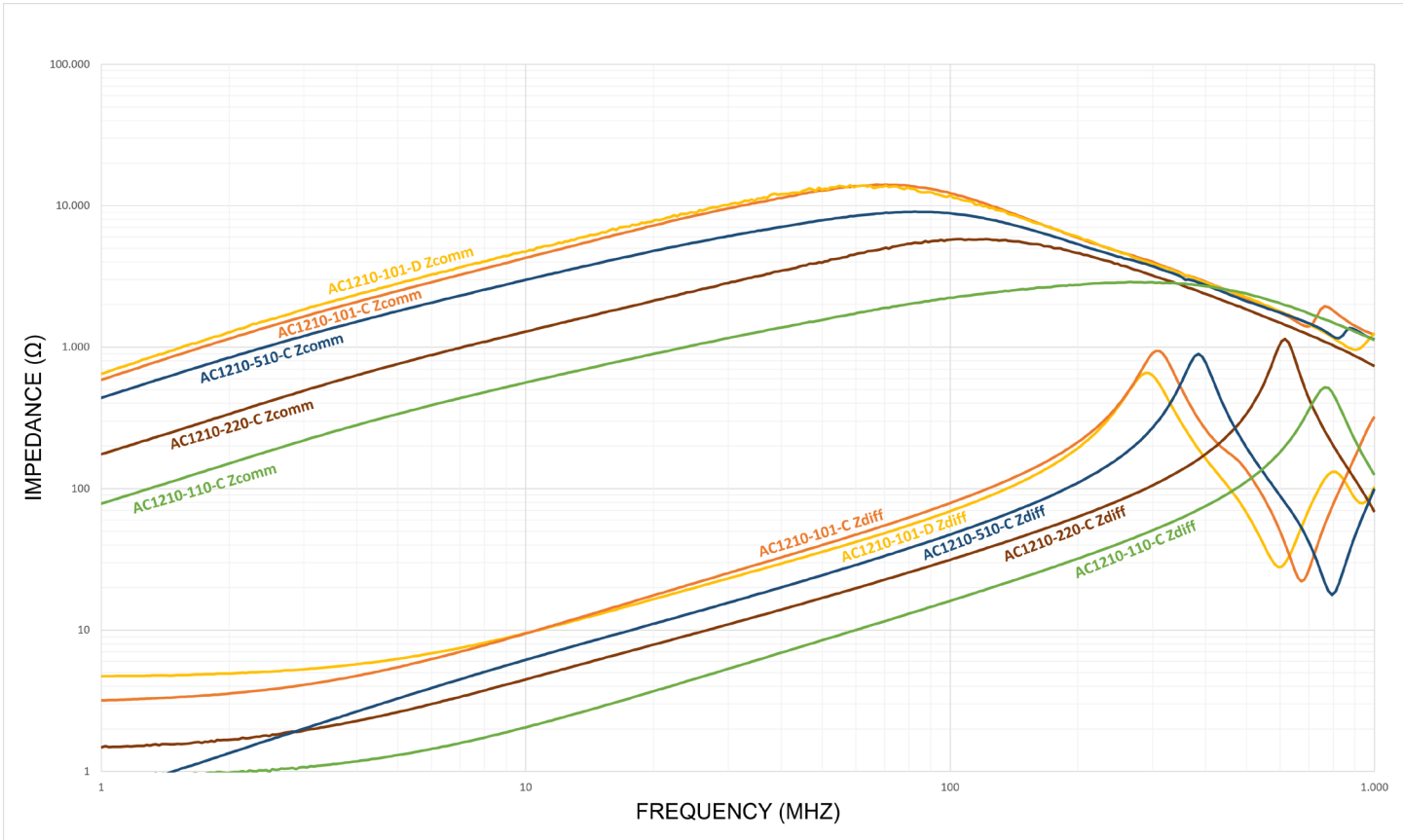


AC1210-101-X



Impedance vs Frequency

AC1210-XXX-X

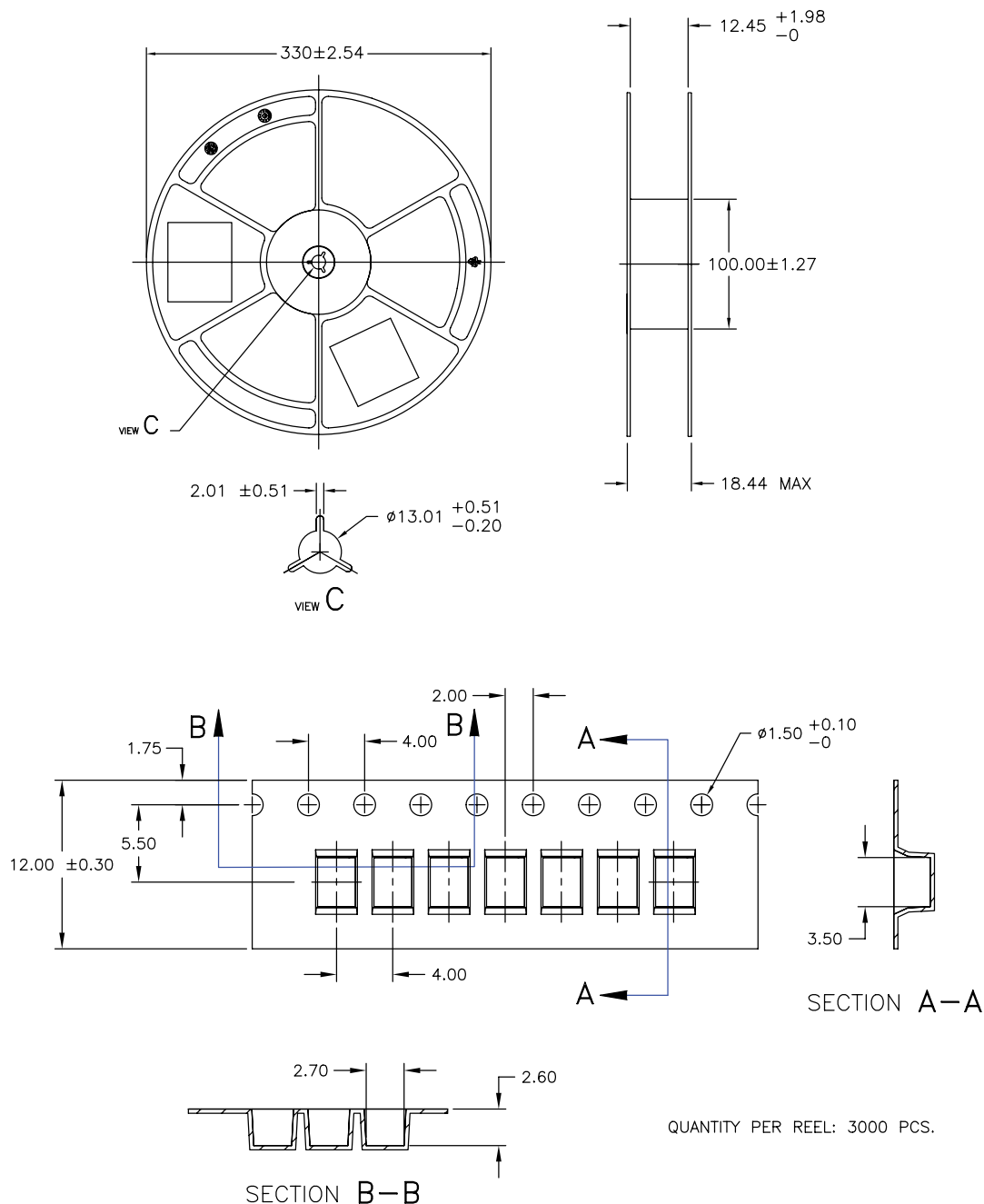


Automotive Pulse Chip™ CAN/CAN-FD Chokes

2-Line EMI Suppression for CAN-FD Bus Networks

Tape & Reel

AC1210-XXX-X



For More Information:

Americas - prodinfo_network_americas@yageo.com | Europe - prodinfo_network_emea@yageo.com | Asia - prodinfo_network_asia@yageo.com

Performance warranty of products offered on this data sheet is limited to the parameters specified. Data is subject to change without notice. Other brand and product names mentioned herein may be trademarks or registered trademarks of their respective owners. © Copyright, 2026. Pulse Electronics, Inc. All rights reserved.

YAGEO Corporation and its affiliates do not recommend the use of commercial or automotive grade products for high reliability applications or manned space flight.