

**Description: MiMo LTE, GNSS Vehicle Mount  
Antenna****Series: Panther****PART NUMBER: GPSMB301, GPSMB302, GPSMB301R,  
GPSMB302R****Features:**

- Supports LTE 698-960/1695-2170/2300-2700/2900-3600MHz(MIMO)
- Supports Beidou, GPS, Galileo, GLONASS
- Direct Mount and optional Magnetic Mount features
- See GPSMBMM for magnetic mount details

**Applications:**

- Energy (Utility Vehicles)
- First Responders (Police, Ambulance, Fire)
- Fleet Management
- Location based services
- Telematics
- Railroad

All dimensions are in mm / inches

Issue: 2531

In the effort to improve our products, we reserve the right to make changes judged to be necessary.

CONFIDENTIAL AND PROPRIETARY INFORMATION

This document contains confidential and proprietary information of Pulse Electronics, Inc. (Pulse) and is protected by copyright, trade secret and other state and federal laws. Its receipt or possession does not convey any rights to reproduce, disclose its contents, or to manufacture, use or sell anything it may describe. Reproduction, disclosure or use without specific written authorization of Pulse is strictly forbidden.

For more information:

Pulse Worldwide Headquarters  
12220 World Trade Drive  
San Diego, CA 92128  
USA  
Tel:1-858-674-8100Pulse/Larsen Antennas  
18110 SE 34<sup>th</sup> St Bldg 2 Suite 250  
Vancouver, WA 98683  
USA  
Tel: 1-360-944-7551Europe Headquarters  
Pulse GmbH & Do, KG  
Zeppelinstrasse 15  
Herrenberg, Germany  
Tel: 49 7032 7806 0Pulse (Suzhou) Wireless Products Co, Inc.  
99 Huo Ju Road(#29 Bldg,4<sup>th</sup> Phase  
Suzhou New District  
Jiangsu Province, Suzhou 215009 PR China  
Tel: 86 512 6807 9998

**Description: MiMo LTE, GNSS Vehicle Mount Antenna**

**Series: Panther**

**PART NUMBER: GPSMB301, GPSMB302, GPSMB301R, GPSMB302R**

**This document covers all product variants of the following product family**

Model No.	Color	Remark
GPSMB301	Black	
GPSMB302	White	
GPSMB301R	Black	Compliant with EN 50155, EN 61373, EN45545-2, railroad application.
GPSMB302R	White	Compliant with EN 50155, EN 61373, EN45545-2, railroad application.

Issue: 2531

In the effort to improve our products, we reserve the right to make changes judged to be necessary.

CONFIDENTIAL AND PROPRIETARY INFORMATION

This document contains confidential and proprietary information of Pulse Electronics, Inc. (Pulse) and is protected by copyright, trade secret and other state and federal laws. Its receipt or possession does not convey any rights to reproduce, disclose its contents, or to manufacture, use or sell anything it may describe. Reproduction, disclosure or use without specific written authorization of Pulse is strictly forbidden.

For more information:

Pulse Worldwide Headquarters  
12220 World Trade Drive  
San Diego, CA 92128  
USA  
Tel: 1-858-674-8100

Pulse/Larsen Antennas  
18110 SE 34<sup>th</sup> St Bldg 2 Suite 250  
Vancouver, WA 98683  
USA  
Tel: 1-360-944-7551

Europe Headquarters  
Pulse GmbH & Do, KG  
Zeppelinstrasse 15  
Herrenberg, Germany  
Tel: 49 7032 7806 0

Pulse (Suzhou) Wireless Products Co, Inc.  
99 Huo Ju Road(#29 Bldg,4<sup>th</sup> Phase  
Suzhou New District  
Jiangsu Province, Suzhou 215009 PR China  
Tel: 86 512 6807 9998



**Description: MiMo LTE, GNSS Vehicle Mount Antenna**

**Series: Panther**

**PART NUMBER: GPSMB301, GPSMB302, GPSMB301R, GPSMB302R**

**ELECTRICAL SPECIFICATIONS**

Frequency (LTE)	698 – 960 / 1695 -2170 / 2300 – 2700 / 2900 - 3600	MHz
Frequency (Beidou, GPS, Galileo, Glonass)	1561.098 ± 2.046/ 1575.42 ± 1.023/ 1602.5625 ± 4	MHz
Nominal Impedance	50	Ω
VSWR (LTE)	< 1.5	
Gain* (LTE antenna, < 2170 MHz)	6	dBi ± 1 dB
Gain* (LTE antenna, > 2170 MHz)	5.5	dBi ± 1 dB
Isolation LTE to LTE**	15 or better	dB
GNSS antenna RHCP gain	1	dBic ± 2dB
LNA gain	30	dB ± 2 dB
Noise Figure	2.5 (cascade)	dB
Current	8	mA ± 2 mA
V <sub>dc</sub>	3-5	V <sub>dc</sub>
LNA and filter attenuation		
	@ 824 MHz	70 dB
	@ 960 MHz	65 dB
	@ 1710 MHz	60 dB
	@ 2170 MHz	65 dB
Connector type	SMA	
Cable type(s)	RG-58 (LTE) / RG-174 (GPS)	
Length	17	Feet

\*Measured on 2ft GND plane and with 4 inch cables

\*\*In free space with 17ft cables

**Description: MiMo LTE, GNSS Vehicle Mount Antenna**

**Series: Panther**

**PART NUMBER: GPSMB301, GPSMB302, GPSMB301R, GPSMB302R**

**MECHANICAL SPECIFICATIONS**

Plastic radome for GPSMB301/GPSMB302	ABS/PC Material UV Stabilized, UL-94HB
for GPSMB301R/GPSMB302R	PC material, EN45545 R6 HL3 compliant
Color	Black, White
Ingress Protection	IP67
Weight	~940 g
Mounting	Direct or Magnetic options

**ENVIRONMENTAL SPECIFICATIONS**

Operating temperature	-40-+85° C
Humidity	95%RH @ +25°C for 12h and 55°C for 12h
Vibration	MIL-STD 810G, section 514.6 , 5-500 Hz, 60min/axis
Thermal Shocks	MIL-STD 810G, section 503.5, -40 to +85°C, 3 cycles
Drop Test	Minimum of one drop per axis – 4, 1 meter drops

**Description: MiMo LTE, GNSS Vehicle Mount Antenna**

**Series: Panther**

**PART NUMBER: GPSMB301, GPSMB302, GPSMB301R, GPSMB302R**

**Tests for railroad certification per EN50155, EN61373, EN45545-2**

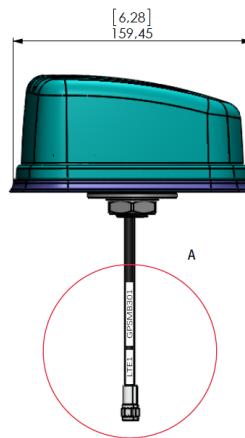
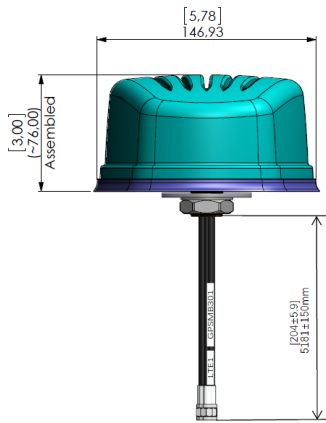
NO	T SN IN STAND	TEST DESCRIPTION	REFER STANDARD	TEST REPORT NO	RESULT(PASS/FAIL)
1	12.2.3	Cooling test	EN 50155	DD20170919002	PASS
2	12.2.4	Dry heat test			
3	12.2.5	Damp heat test, cyclic			
4	12.2.6	Supply overvoltages	EN 50155	W01714200900E	PASS
5	12.2.7	Surges, electrostatic discharge and transient burst susceptibility tests	EN 50155	E1710056-01E	PASS
6	12.2.8	Radio interference			
7	12.2.9	Insulation test	EN 50155	E17110014-01E	PASS
8	12.2.10	Salt mist test	EN 50155	DD20170919002	PASS
9	12.2.11	Vibration	EN 61373		
		Shock, and bump test	EN 61373		
10	12.2.12	Watertightness test	EN 50155		
11	12.2.14	Low temperature storage test	EN 50155	TC 18 02 000528	HL1&HL2
12	/	fire & smoke	EN 45545-2 R15&R16		
			EN 45545-2 R15&R16	TC.18.04.001633	HL1&HL2&HL3

**Description: MiMo LTE, GNSS Vehicle Mount Antenna**

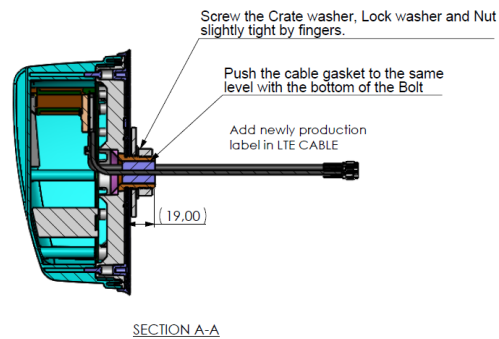
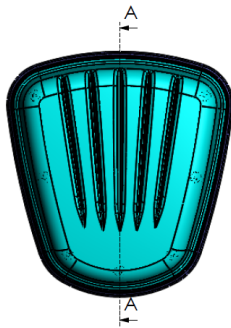
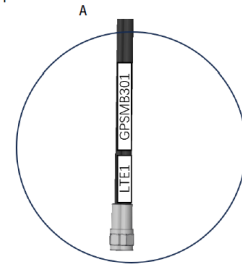
**Series: Panther**

**PART NUMBER: GPSMB301, GPSMB302, GPSMB301R, GPSMB302R**

**MECHANICAL DRAWING**



Schematic diagram of production label location



Issue: 2531

In the effort to improve our products, we reserve the right to make changes judged to be necessary.

CONFIDENTIAL AND PROPRIETARY INFORMATION

This document contains confidential and proprietary information of Pulse Electronics, Inc. (Pulse) and is protected by copyright, trade secret and other state and federal laws. Its receipt or possession does not convey any rights to reproduce, disclose its contents, or to manufacture, use or sell anything it may describe. Reproduction, disclosure or use without specific written authorization of Pulse is strictly forbidden.

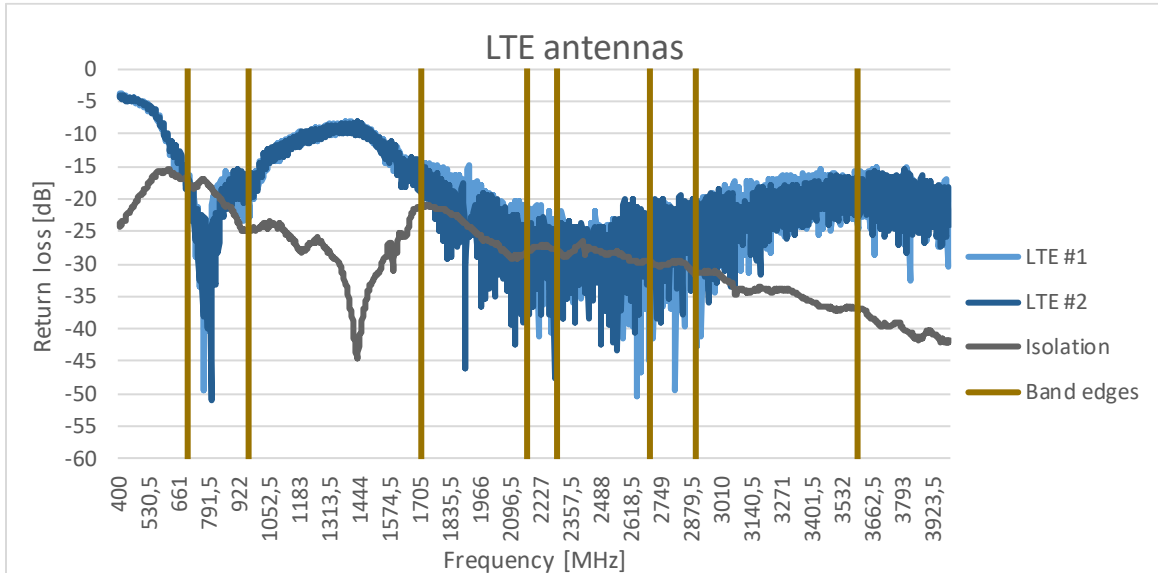
**Description: MiMo LTE, GNSS Vehicle Mount Antenna**

**Series: Panther**

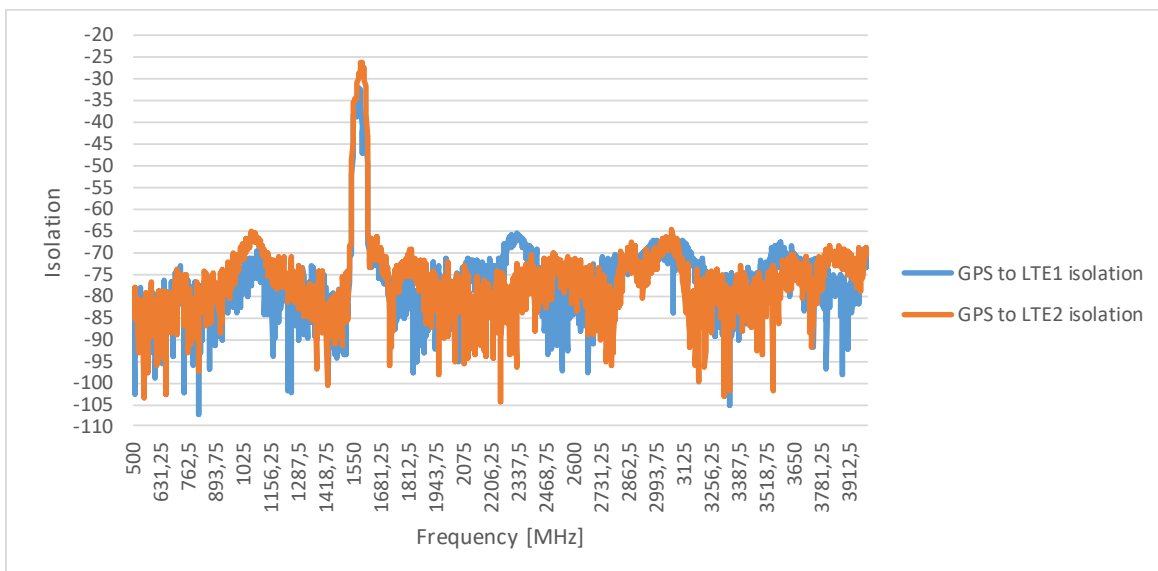
**PART NUMBER: GPSMB301, GPSMB302, GPSMB301R, GPSMB302R**

**CHARTS**

Return loss and isolation in free space, LTE antennas\*\*



GNSS isolation to LTE 1 and LTE 2 antenna\*



Issue: 2531

In the effort to improve our products, we reserve the right to make changes judged to be necessary.

CONFIDENTIAL AND PROPRIETARY INFORMATION

This document contains confidential and proprietary information of Pulse Electronics, Inc. (Pulse) and is protected by copyright, trade secret and other state and federal laws. Its receipt or possession does not convey any rights to reproduce, disclose its contents, or to manufacture, use or sell anything it may describe. Reproduction, disclosure or use without specific written authorization of Pulse is strictly forbidden.

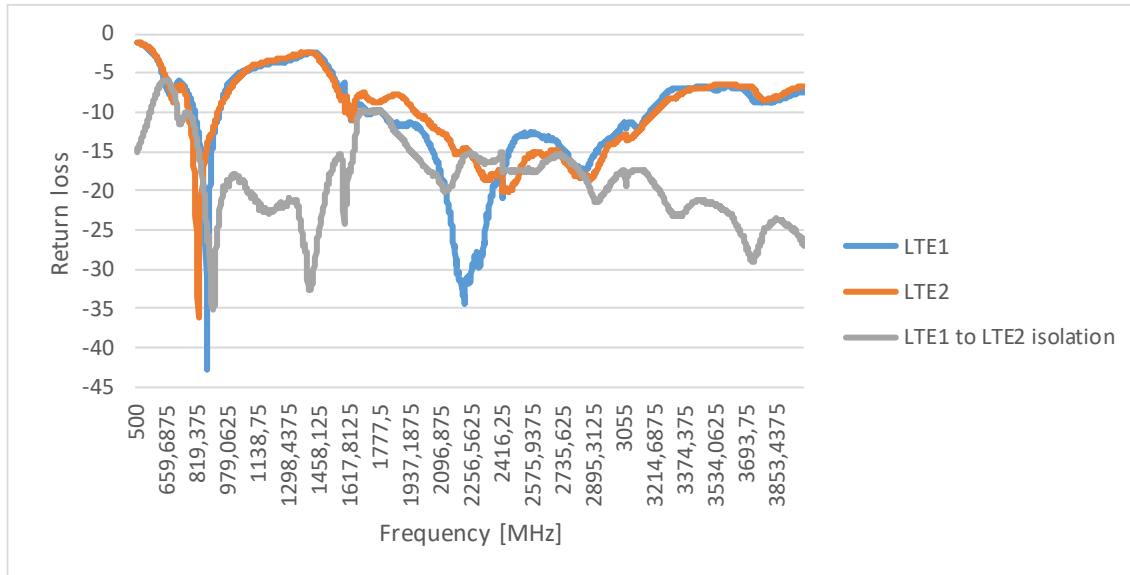
**Description: MiMo LTE, GNSS Vehicle Mount Antenna**

**Series: Panther**

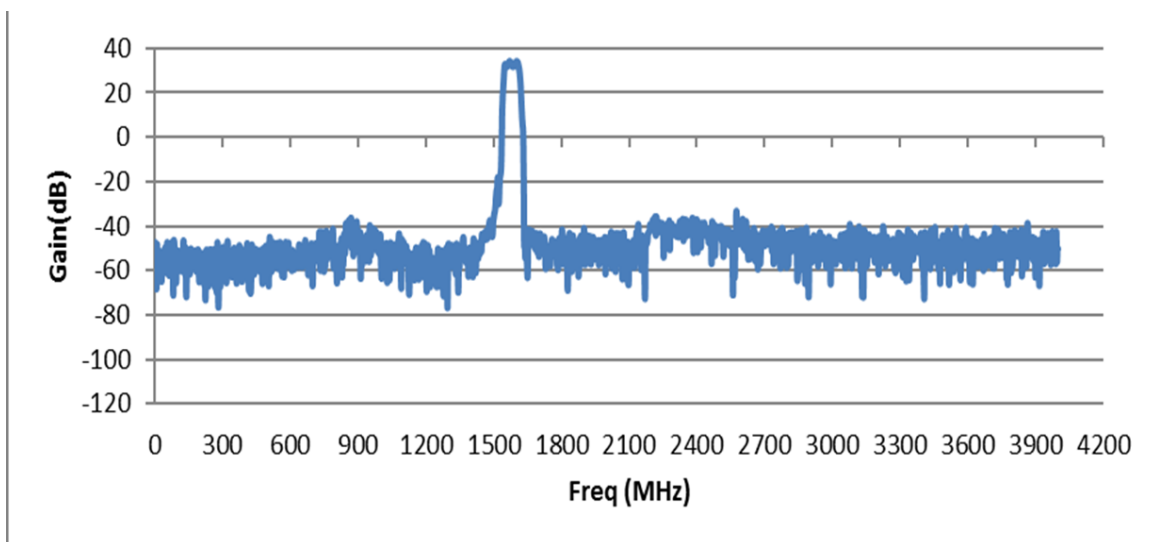
**PART NUMBER: GPSMB301, GPSMB302, GPSMB301R, GPSMB302R**

**CHARTS**

**Return loss and isolation, LTE antennas\***



**GNSS LNA performance**



Issue: 2531

In the effort to improve our products, we reserve the right to make changes judged to be necessary.

CONFIDENTIAL AND PROPRIETARY INFORMATION

This document contains confidential and proprietary information of Pulse Electronics, Inc. (Pulse) and is protected by copyright, trade secret and other state and federal laws. Its receipt or possession does not convey any rights to reproduce, disclose its contents, or to manufacture, use or sell anything it may describe. Reproduction, disclosure or use without specific written authorization of Pulse is strictly forbidden.

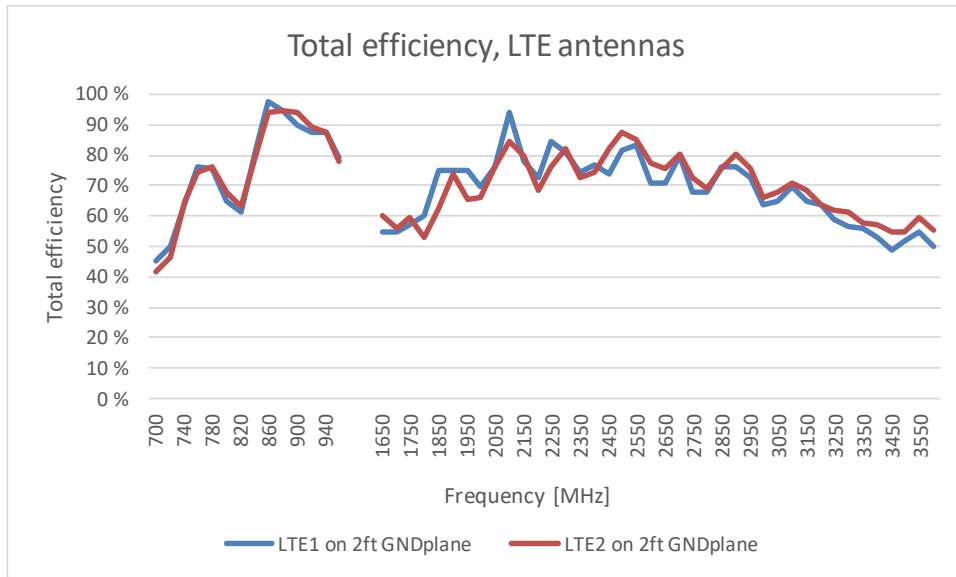
**Description: MiMo LTE, GNSS Vehicle Mount Antenna**

**Series: Panther**

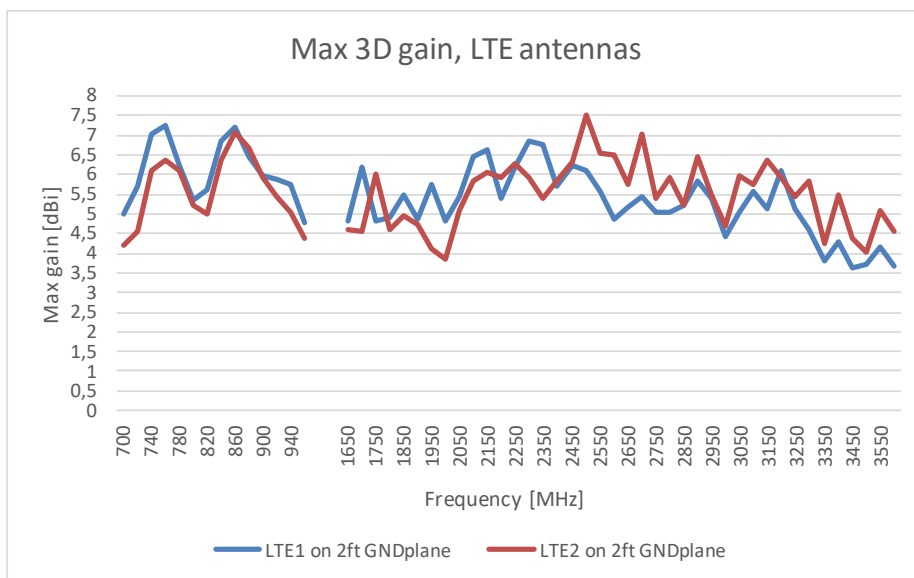
**PART NUMBER: GPSMB301, GPSMB302, GPSMB301R, GPSMB302R**

**CHARTS**

LTE antenna total efficiency with 2ft metal plate and 4 inch cables



Maximum 3D gain, LTE antenna with 2ft metal plate and 4inch cables



Issue: 2531

In the effort to improve our products, we reserve the right to make changes judged to be necessary.

CONFIDENTIAL AND PROPRIETARY INFORMATION

This document contains confidential and proprietary information of Pulse Electronics, Inc. (Pulse) and is protected by copyright, trade secret and other state and federal laws. Its receipt or possession does not convey any rights to reproduce, disclose its contents, or to manufacture, use or sell anything it may describe. Reproduction, disclosure or use without specific written authorization of Pulse is strictly forbidden.

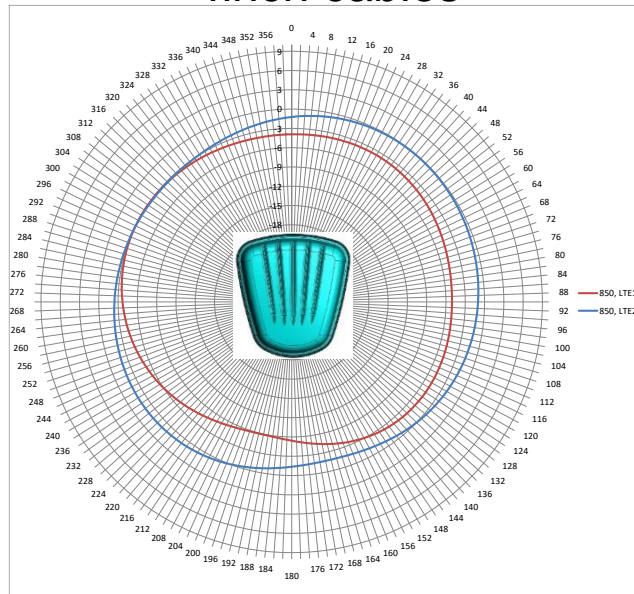
**Description: MiMo LTE, GNSS Vehicle Mount Antenna**

**Series: Panther**

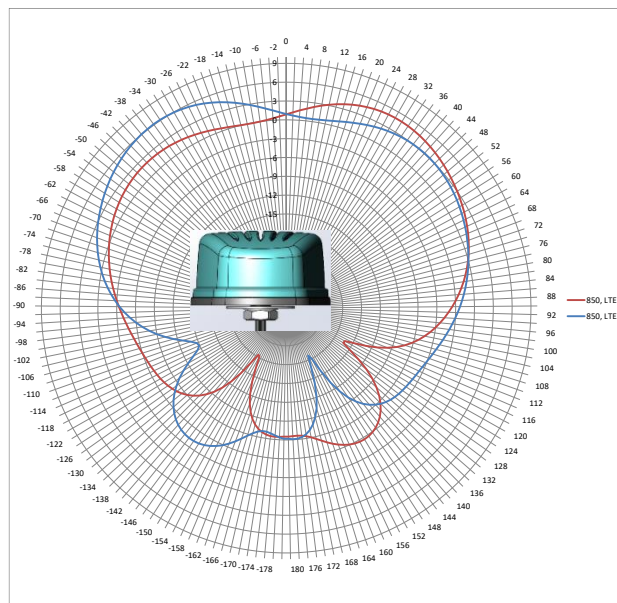
**PART NUMBER: GPSMB301, GPSMB302, GPSMB301R, GPSMB302R**

**CHARTS**

LTE antenna radiation pattern at 850MHz with 2ft metal plate and 4inch cables



Horizontal plot



Vertical plot front view

Issue: 2531

In the effort to improve our products, we reserve the right to make changes judged to be necessary.

CONFIDENTIAL AND PROPRIETARY INFORMATION

This document contains confidential and proprietary information of Pulse Electronics, Inc. (Pulse) and is protected by copyright, trade secret and other state and federal laws. Its receipt or possession does not convey any rights to reproduce, disclose its contents, or to manufacture, use or sell anything it may describe. Reproduction, disclosure or use without specific written authorization of Pulse is strictly forbidden.

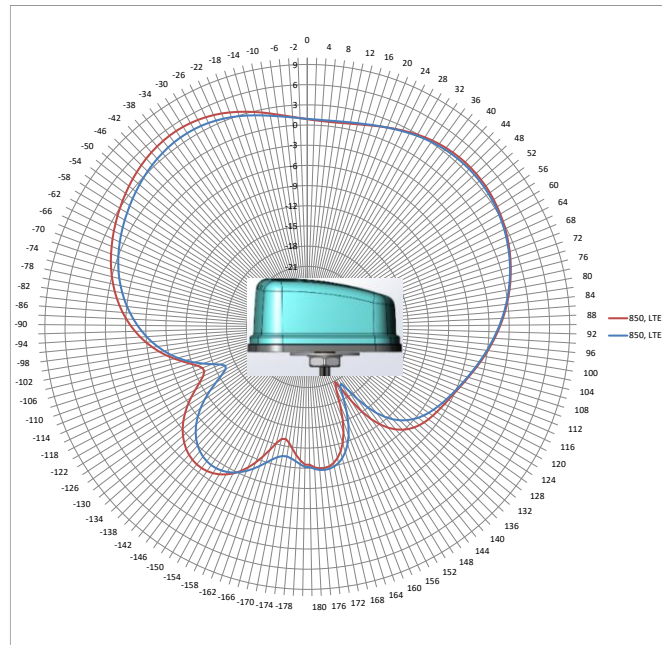
**Description: MiMo LTE, GNSS Vehicle Mount  
Antenna**

**Series: Panther**

**PART NUMBER: GPSMB301, GPSMB302, GPSMB301R,  
GPSMB302R**

**CHARTS**

LTE antenna radiation pattern at 850MHz with 2ft metal plate and 4inch cables



Vertical plot side view

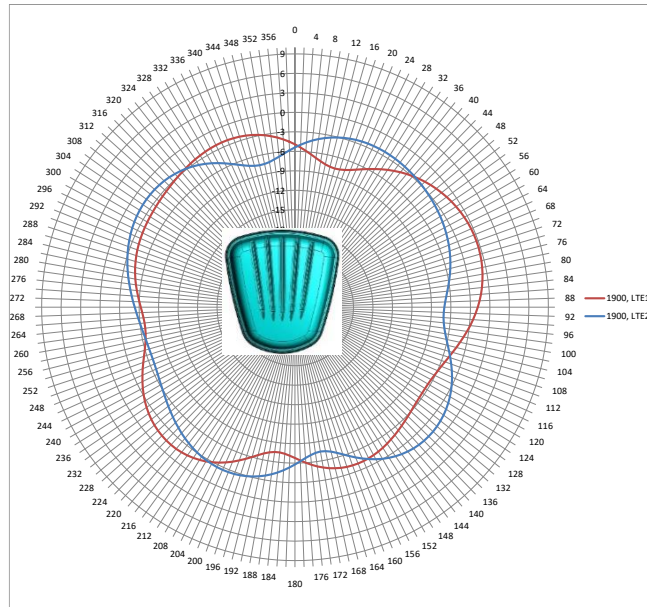
**Description: MiMo LTE, GNSS Vehicle Mount Antenna**

**Series: Panther**

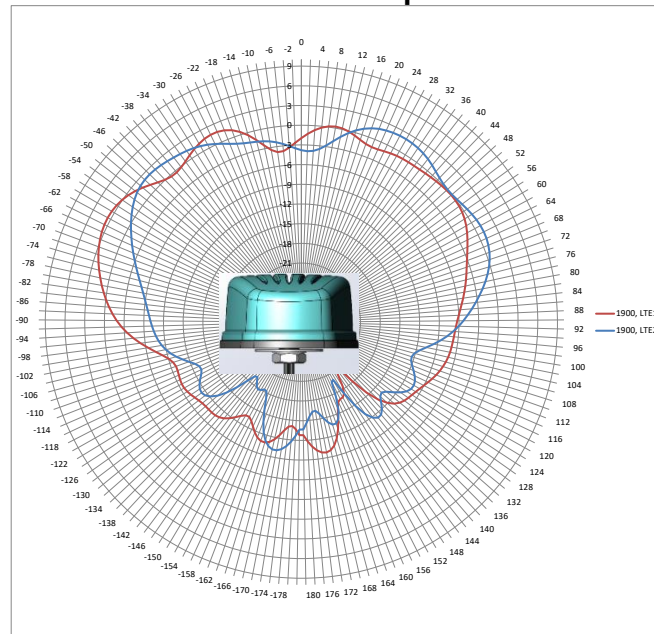
**PART NUMBER: GPSMB301, GPSMB302, GPSMB301R, GPSMB302R**

**CHARTS**

LTE antenna radiation pattern at 1900MHz with 2ft metal plate and 4inch cables



**Horizontal plot**



**Vertical plot front view**

Issue: 2531

In the effort to improve our products, we reserve the right to make changes judged to be necessary.

CONFIDENTIAL AND PROPRIETARY INFORMATION

This document contains confidential and proprietary information of Pulse Electronics, Inc. (Pulse) and is protected by copyright, trade secret and other state and federal laws. Its receipt or possession does not convey any rights to reproduce, disclose its contents, or to manufacture, use or sell anything it may describe. Reproduction, disclosure or use without specific written authorization of Pulse is strictly forbidden.

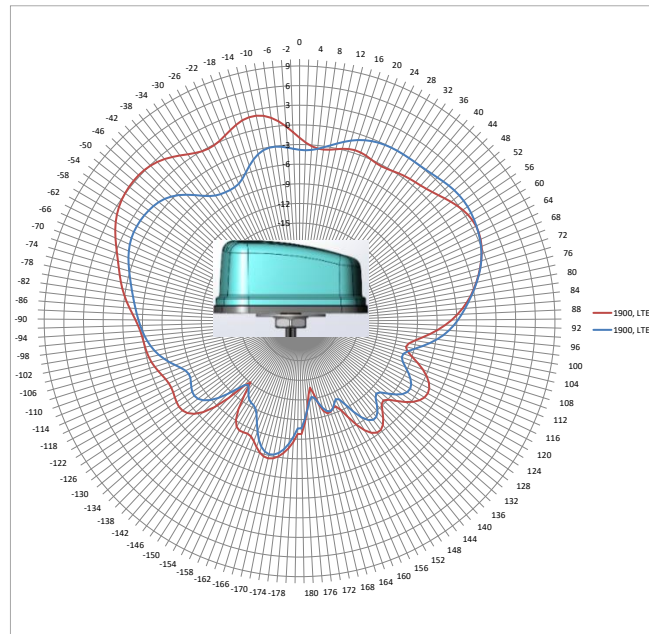
**Description: MiMo LTE, GNSS Vehicle Mount Antenna**

**Series: Panther**

**PART NUMBER: GPSMB301, GPSMB302, GPSMB301R, GPSMB302R**

**CHARTS**

**LTE antenna radiation pattern at 1900MHz with 2ft metal plate and 4inch cables**



**Vertical plot side view**

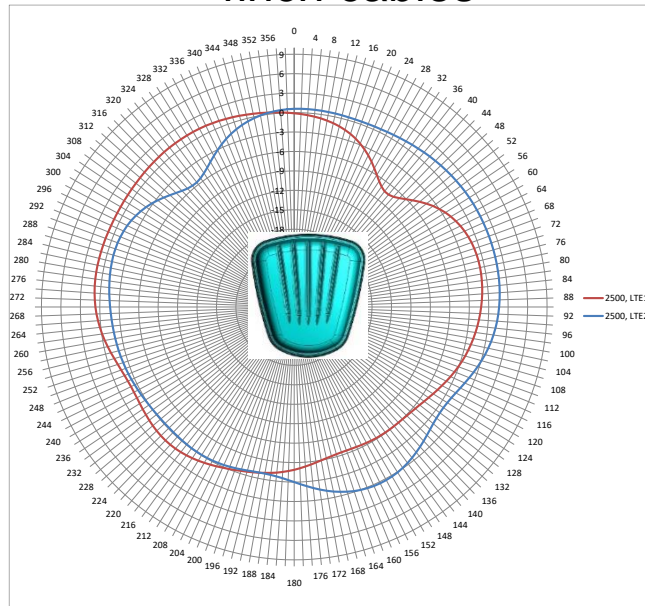
**Description: MiMo LTE, GNSS Vehicle Mount Antenna**

**Series: Panther**

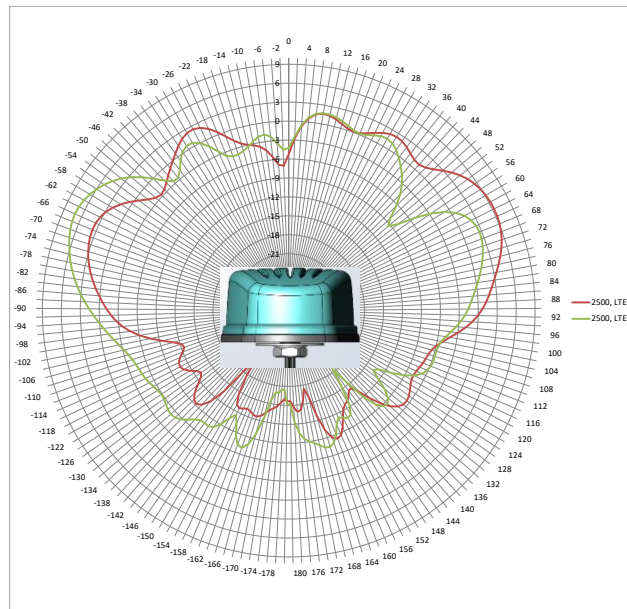
**PART NUMBER: GPSMB301, GPSMB302, GPSMB301R, GPSMB302R**

**CHARTS**

LTE antenna radiation pattern at 2500MHz with 2ft metal plate and 4inch cables



**Horizontal plot**



**Vertical plot front view**

Issue: 2531

In the effort to improve our products, we reserve the right to make changes judged to be necessary.

CONFIDENTIAL AND PROPRIETARY INFORMATION

This document contains confidential and proprietary information of Pulse Electronics, Inc. (Pulse) and is protected by copyright, trade secret and other state and federal laws. Its receipt or possession does not convey any rights to reproduce, disclose its contents, or to manufacture, use or sell anything it may describe. Reproduction, disclosure or use without specific written authorization of Pulse is strictly forbidden.

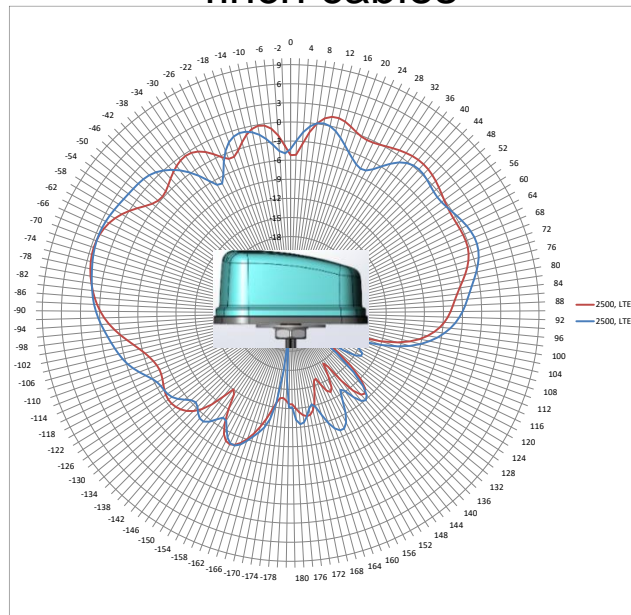
**Description: MiMo LTE, GNSS Vehicle Mount  
Antenna**

**Series: Panther**

**PART NUMBER: GPSMB301, GPSMB302, GPSMB301R,  
GPSMB302R**

**CHARTS**

LTE antenna radiation pattern at 2500MHz with 2ft metal plate and 4inch cables



Vertical plot side view

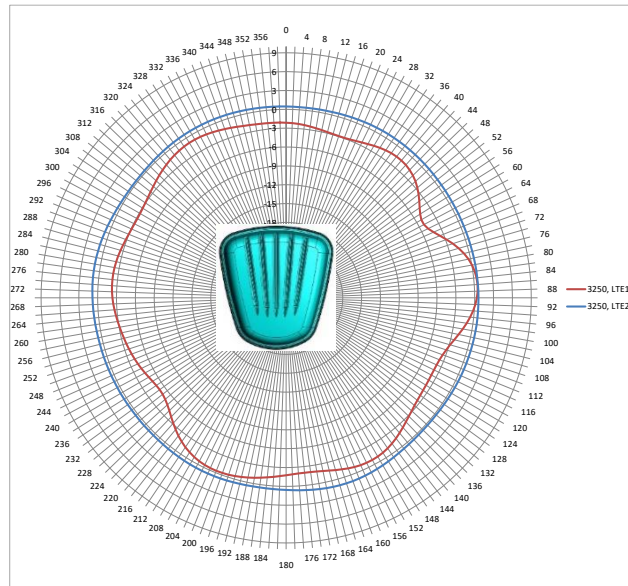
**Description: MiMo LTE, GNSS Vehicle Mount  
Antenna**

**Series: Panther**

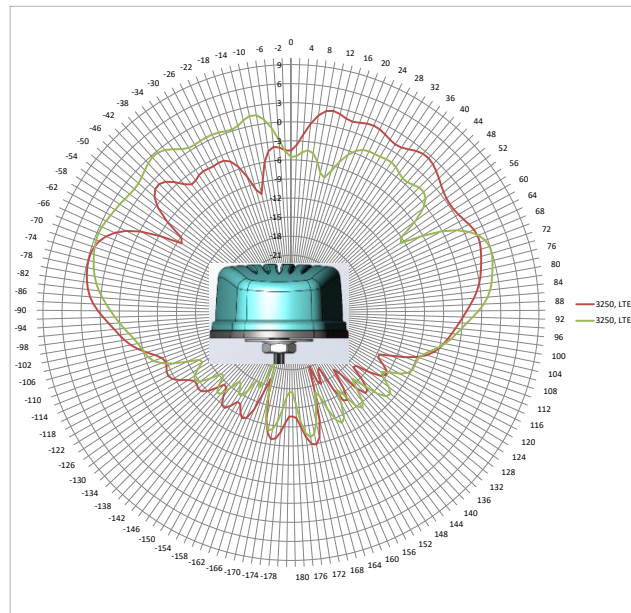
**PART NUMBER: GPSMB301, GPSMB302, GPSMB301R,  
GPSMB302R**

**CHARTS**

LTE antenna radiation pattern at 3250MHz with 2ft metal plate and 4inch cables



**Horizontal plot**



**Vertical plot front view**

Issue: 2531

In the effort to improve our products, we reserve the right to make changes judged to be necessary.

CONFIDENTIAL AND PROPRIETARY INFORMATION

This document contains confidential and proprietary information of Pulse Electronics, Inc. (Pulse) and is protected by copyright, trade secret and other state and federal laws. Its receipt or possession does not convey any rights to reproduce, disclose its contents, or to manufacture, use or sell anything it may describe. Reproduction, disclosure or use without specific written authorization of Pulse is strictly forbidden.

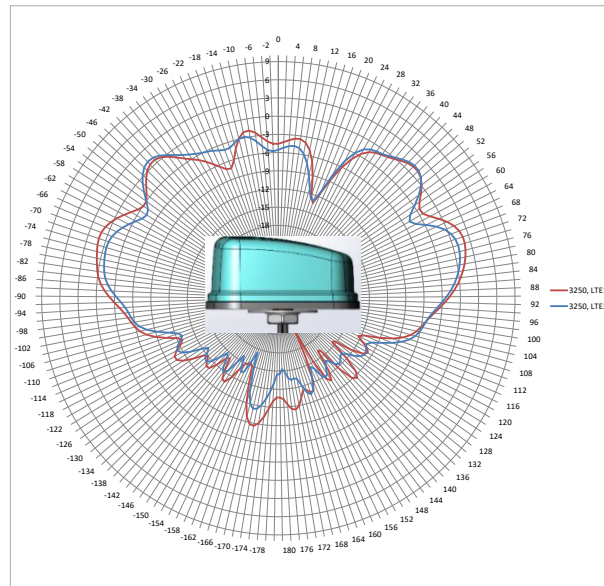
**Description: MiMo LTE, GNSS Vehicle Mount  
Antenna**

**Series: Panther**

**PART NUMBER: GPSMB301, GPSMB302, GPSMB301R,  
GPSMB302R**

**CHARTS**

**LTE antenna radiation pattern at 3250MHz with 2ft metal plate and  
4inch cables**



**Vertical plot side view**

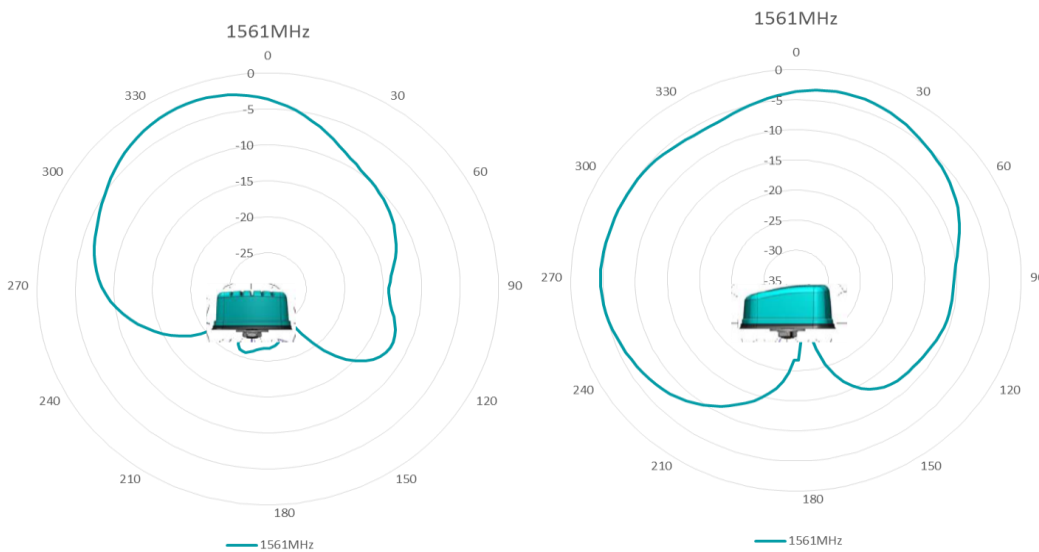
**Description: MiMo LTE, GNSS Vehicle Mount Antenna**

**Series: Panther**

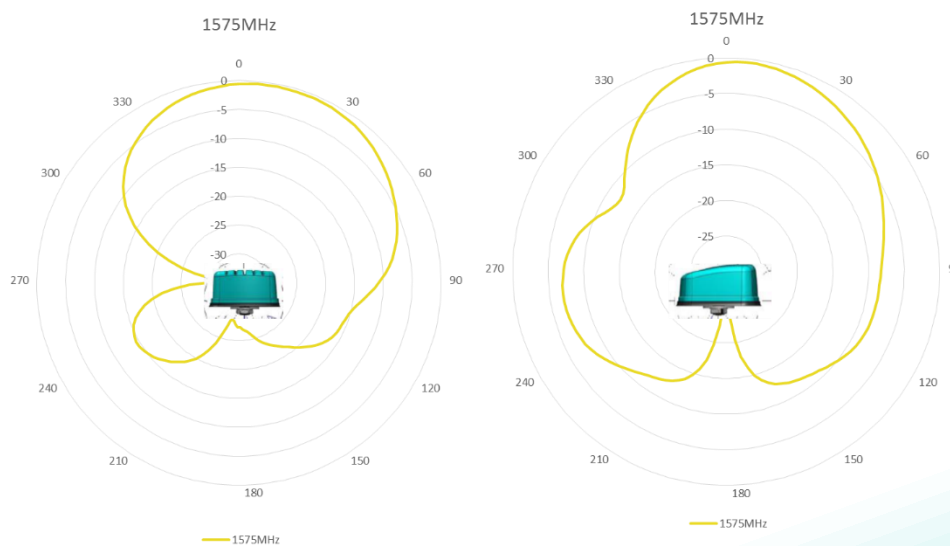
**PART NUMBER: GPSMB301, GPSMB302, GPSMB301R, GPSMB302R**

**CHARTS**

**BD2 RHCP patterns, measured with 4inch cables in free space**



**GPS & Galileo RHCP patterns, measured with 4inch cables in free space**



Issue: 2531

In the effort to improve our products, we reserve the right to make changes judged to be necessary.

CONFIDENTIAL AND PROPRIETARY INFORMATION

This document contains confidential and proprietary information of Pulse Electronics, Inc. (Pulse) and is protected by copyright, trade secret and other state and federal laws. Its receipt or possession does not convey any rights to reproduce, disclose its contents, or to manufacture, use or sell anything it may describe. Reproduction, disclosure or use without specific written authorization of Pulse is strictly forbidden.

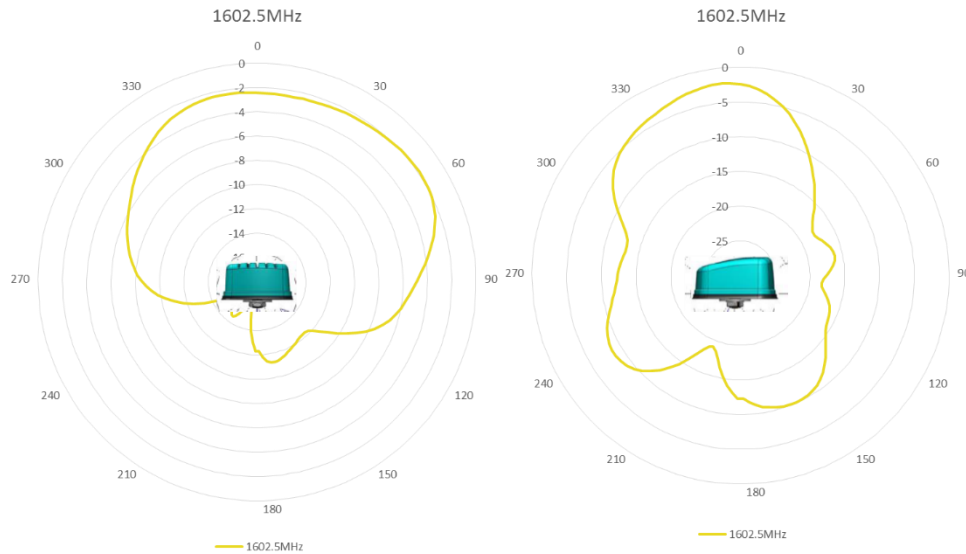
**Description: MiMo LTE, GNSS Vehicle Mount  
Antenna**

**Series: Panther**

**PART NUMBER: GPSMB301, GPSMB302, GPSMB301R,  
GPSMB302R**

**CHARTS**

GLONASS RHCP patterns, measured with 4inch cables in free space



Issue: 2531

In the effort to improve our products, we reserve the right to make changes judged to be necessary.

CONFIDENTIAL AND PROPRIETARY INFORMATION

This document contains confidential and proprietary information of Pulse Electronics, Inc. (Pulse) and is protected by copyright, trade secret and other state and federal laws. Its receipt or possession does not convey any rights to reproduce, disclose its contents, or to manufacture, use or sell anything it may describe. Reproduction, disclosure or use without specific written authorization of Pulse is strictly forbidden.

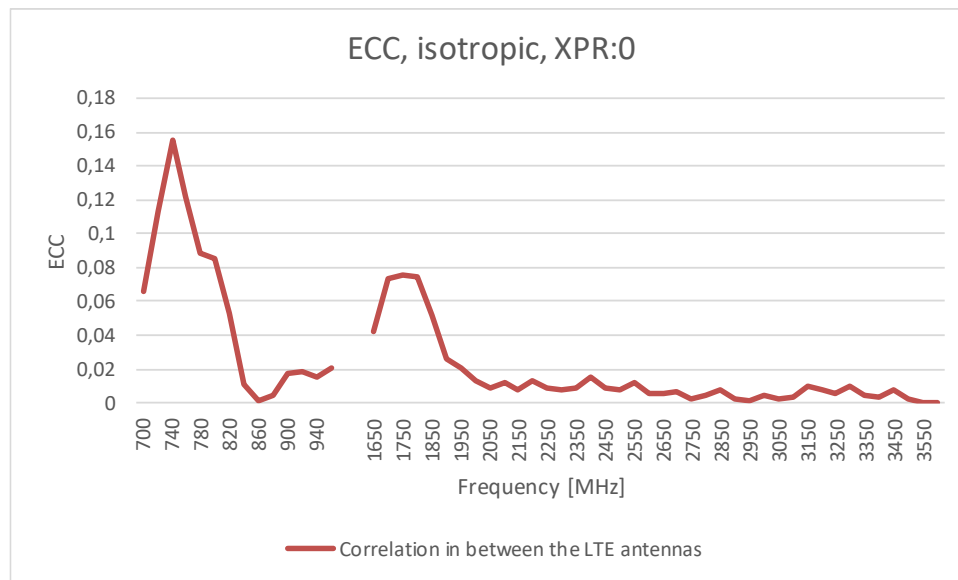
**Description: MiMo LTE, GNSS Vehicle Mount Antenna**

**Series: Panther**

**PART NUMBER: GPSMB301, GPSMB302, GPSMB301R, GPSMB302R**

**CHARTS**

**Envelope correlation coefficient - LTE 1 to LTE 2**



**Description: MiMo LTE, GNSS Vehicle Mount  
Antenna**

**Series: Panther**

**PART NUMBER: GPSMB301, GPSMB302, GPSMB301R,  
GPSMB302R**

**PACKAGING**

One antenna pack in one PE bag, 6 antennae in one box