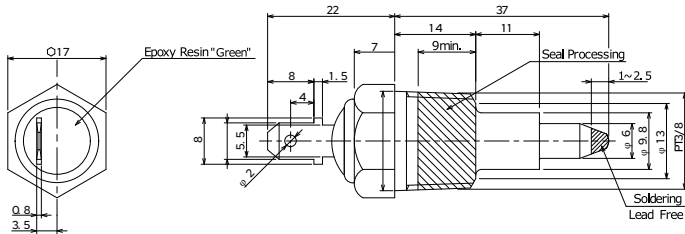


TRS1-90MPR002

Aliases (USEP90MPR00200)

KEMET, TRS-P, Thermal Reed Switch, Screw-In, 3C Temperature Accuracy, High Reliability, High-Speed Response, Long Operational Life, Excellent Environmental Durability, High Temperature Accuracy, 90°C, Make



Click [here](#) for the 3D model.

General Information

Series	TRS-P
Type	Thermal Reed Switch
Style	Screw-In
Description	Thermal Reed Switch
Features	High Reliability, High-Speed Response, Long Operational Life, Excellent Environmental Durability, High Temperature Accuracy
RoHS	Yes
REACH	Yes

Dimensions

L	37mm NOM
W	17mm NOM

Packaging Specifications

Packaging	Box
Packaging Quantity	100
Typical Component Weight	35 g

Specifications

Switching Temp.	90C +/-3C
Temperature Range	-20/+130°C
Contact Type	Make
Voltage DC	100 VDC MAX (Opening/Closing)
Current	0.5 Amps DC MAX (Opening/Closing), 5 mAmps MIN (1VDC, Opening/Closing)
ESR	500 mOhms MAX (Contact Resistance)
Max Opening/Closing Power	10 (DC)
Max Opening/Closing Voltage	100 (DC)
Differential Temperature	10C Maximum

Statements of suitability for certain applications are based on our knowledge of typical operating conditions for such applications, but are not intended to constitute - and we specifically disclaim - any warranty concerning suitability for a specific customer application or use. This Information is intended for use only by customers who have the requisite experience and capability to determine the correct products for their application. Any technical advice inferred from this Information or otherwise provided by us with reference to the use of our products is given gratis, and we assume no obligation or liability for the advice given or results obtained.